

THRANE & THRANE EXPLORER™ 300

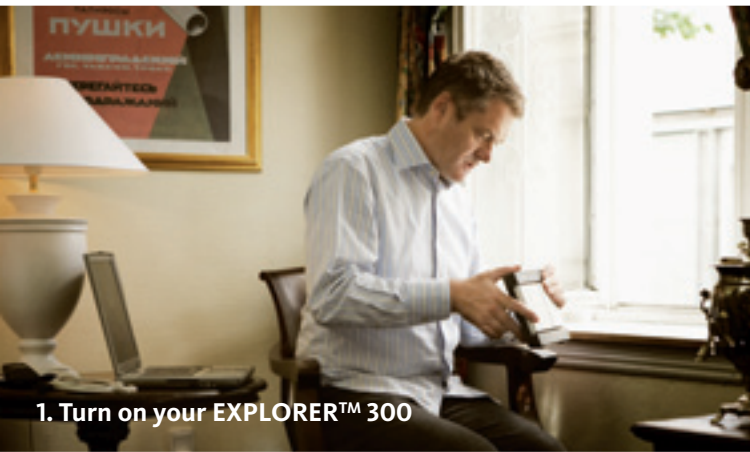
# CONNECT YOURSELF WITH THE SMALLEST OF THE BEST

EXPLORER™ 300 brings new meaning to mobile broadband



Thrane & Thrane

# HOOKED ON BROADB



1. Turn on your EXPLORER™ 300



2. Aim it at the satellite

As we become more accustomed to always having broadband within our reach at home and at the office, doing without it when travelling the globe simply won't do. We are hooked. We need instant access no matter where we are. Well, access granted. EXPLORER™ 300 is the latest addition to Thrane & Thrane's EXPLORER™ Family of highly sophisticated, yet easy to use, mobile broadband solutions.

## **Simplicity of communication**

Communication between people today is key, no matter where and who you are. As such, eliminating every bit of technical difficulty in the process is all-important. EXPLORER™ 300 offers great usability, versatility and general functionality – whenever and wherever you need it. Thrane & Thrane makes sure connections are clear. The words are up to you.

## **Access granted**

With EXPLORER™ 300, Thrane & Thrane grants you not only instant, but also constant access to your boss, co-workers, customers, family and friends via the e-mail or phone. You will never lose touch when armed with the interfaces of the EXPLORER™ 300.

## **The constant of high-end communication**

When travelling the globe, you will often experience that local terrestrial networks are unavailable or not up standard thus making your work difficult or impossible. Communication by Thrane & Thrane is cutting-edge and reliable – this is an incontrovertible demand we put upon ourselves. As such, high-end standards for us, means high-end communication for you. And with the EXPLORER™ 300, we have wrapped it in a smart, handy and affordable package.

## **Inmarsat – pioneering satellite communication**

It all began in 1979. At first, the focus was maritime security in far away waters. Today Inmarsat is the leading satellite communication network of the world. Inmarsat provides satellite communication services to ship owners, business people, TV broadcasters, aid workers, governments, airlines and many others. BGAN is Inmarsat's newest, most advanced offering.

# AND – EASILY



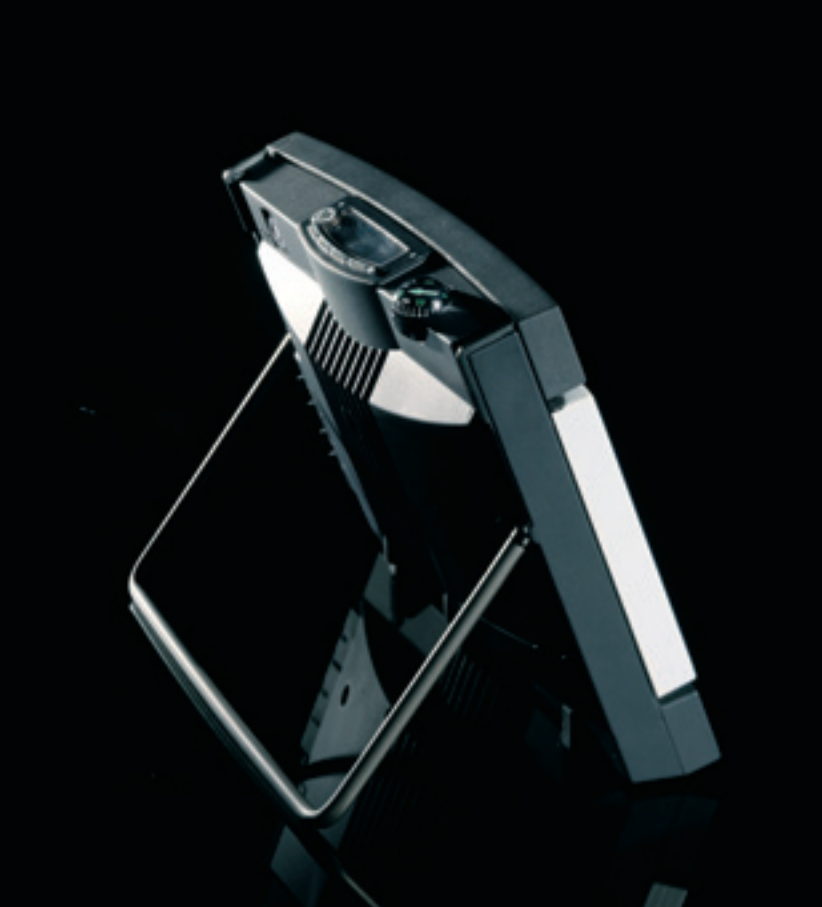
3. Connect



4. Communicate!

## EXPLORER™ 300





## Smaller than your average carry-on

With a sleek and compact design, the EXPLORER™ 300 can easily be brought along everywhere you go. Weighing a mere 1.4 kg, this neat little item fits in your bag and is both smaller and lighter than most of the things, you are used to taking with you when travelling. So there will be no tiresome lugging of an EXPLORER™ 300. For that, it is far too light and easy to carry.

## A single-user terminal with strong genes

As a close relative of the EXPLORER™ 500 and EXPLORER™ 700, EXPLORER™ 300 has very strong “genes”. Offering the unique features of the EXPLORER™ Family, being highly customizable, easy to use with plug and play capability, the EXPLORER™ 300 lets you start out with the smallest most lightweight of the best – a very cool single-user terminal. In short, the specs (see page 6) of the EXPLORER™ 300 give you simplicity, functionality and versatility – also if you are new to satellite communication.



**E-mail** – Often, the crucial part of an e-mail is contained in a large attachment. With EXPLORERTM 300, reading the e-mail and fetching the attachments is swift and easy.



**World Wide Web** – With EXPLORERTM 300, you can surf the Internet as you would at home.



**Phone** – You can connect one handset via cable to the EXPLORERTM 300. The Wireless Bluetooth connection offers support for up to 2 devices, including head-, hand- and earsets.



**Corporate LAN** – With a Virtual Private Connection you gain access to your corporate network from places you have never even dreamed of. No slow connections here.



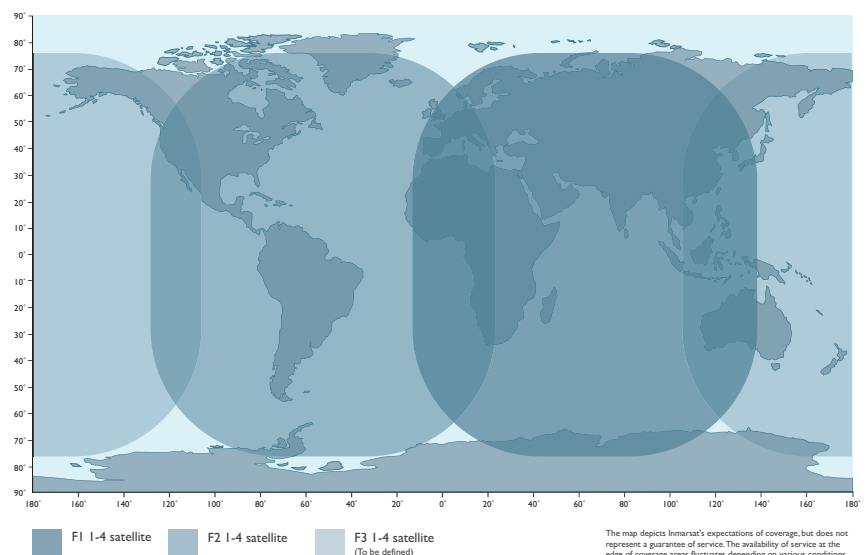
## Huge coverage from a tiny terminal – with BGAN

With Thrane & Thrane's pioneering state-of-the-art BGAN terminals, such as the EXPLORER™ 300, you are guaranteed world class satellite communication and work comfort. BGAN covers more of the world than even the leading cellular networks. So to be blunt – coverage is huge. At the same time, though, airtime prices are tiny like the terminal. This is because Thrane & Thrane knows how to work with dimensions – it all has to fit well together for you.

### The EXPLORER™ 300 lets you:

- Talk on the phone
- Download and send e-mails
- Surf the Internet at speeds up to 384 kbps
- Log on to your corporate Intranet
- Transfer files
- Use standard encryption such as VPN
- Send text messages and more

### BGAN coverage



# A GROWING FAMILY

Thrane & Thrane continually develops BGAN solutions to suit every need. Compare below.



	EXPLORER™ 300	EXPLORER™ 500	EXPLORER™ 700
Bandwidth (Rx/Tx)	384/240kbps	464/448kbps	492/492kbps
Streaming IP (guaranteed bandwidth)	32 & 64kbps	32, 64 & 128kbps	32, 64, 128 & 256kbps
ISDN	No	No	Yes – 2 ports
Ethernet	Yes – 1 port	Yes – 1 port	Yes – 2 ports
2-wire	Yes – 1 port	Yes – 1 port	Yes – 2 ports
Solar panel input	No	No	Yes
Bluetooth	Yes – Class 1 (limited range: 25m) Supports dial-up, cordless phone & serial port	Yes – Class 1 Supports dial-up, cordless phone & serial port	Yes – Class 1 Supports dial-up, cordless phone & serial port
WLAN	No	No	Yes – 802.11B/G up to 54Mbps
External antenna	No	Yes – up to 10m	Yes – up to 70m
Battery	Li-On – 36h standby and 1.2h Tx @ 96kbps	Li-On – 36h standby and 2.25h Tx @ 128kbps	Li-On – 36h standby and 2.5h Tx @ 144kbps
Weight	1.4kg / 3.1lbs	1.4kg / 3.1lbs	3.2kg / 7.0lbs
Size (H x W x D)	17.0 x 21.7 x 5.2cm / 6.69 x 8.5 x 2.1inches	21.8 x 21.7 x 5.2cm / 8.6 x 8.5 x 2.1inches	29.7 x 39.9 x 5.1cm / 12.1 x 16.0 x 2.0inches
IP grade	IP 54	IP 54 External antenna IP 66	Transceiver IP 52 Antenna IP 66



## Know your net-words

**BGAN** – Broadband Global Area Network. Inmarsat’s term for the new global broadband network with transfer rates up to 492 kbps.

**R-BGAN** - Not to be confused with BGAN. Inmarsat’s Regional Broadband Global Area Network. A slower connection than BGAN not offering voice or IP streaming. Thrane & Thrane does not currently market any R-BGAN terminals.

**GAN** – Global Area Network. The term is constructed on the model of the Local Area Network (LAN), which has become the standard for offices all over the globe. The Inmarsat GAN offers wireless ISDN all over the globe. The Messenger is Thrane & Thrane’s GAN terminal.

**Standard data** – With standard data, you get a variable transfer rate, depending on the terminal, geographic location and conditions. BGAN allows data transfer rates at up to 492 kbps.

**Streaming IP** – Streaming is a technique for transferring data to be processed as a continuous stream – e.g. live video or audio, typically demanding high bandwidth.

**Standard voice** – BGAN also offers world-wide telephony. By dialling 00, country code and phone number, you can speak in a clear voice to anyone around the globe. Standard voice requires very little bandwidth, only 4 kbps. Voice mail included.

**Premium voice** – Premium voice is uncompressed audio in pristine quality, using more bandwidth than standard voice. More advanced voice services are also possible, e.g. call waiting, call holding, call barring and call forwarding.

**Bluetooth** – Bluetooth makes a lot of cables redundant. It is a short distance wireless connection allowing head- and handsets, as well as PCs to connect wirelessly.

**VPN** – A Virtual Private Network is a software solution that allows users to securely access a corporate network via the Internet.

# WORLD LEADERS

Thrane & Thrane is world leader in terminals and land earth stations based on the Inmarsat satellite services. Around 300,000 Inmarsat terminals have been sold worldwide. Approximately 100,000 of these have been delivered by Thrane & Thrane.

## Innovation without Limits

Our focus on new technology development and constant innovation has assured us a position as preferred development partner for Inmarsat. Creating the broadband infrastructure of the future, Thrane & Thrane has been commissioned to develop the Radio Access Network for Inmarsat's BGAN high-speed satellite system. Just one proof of how we continue to bring new, innovative solutions to the market.

**“Competent and creative engineers that think extreme and act rationally.”**

– Lars Thrane, Founder & President

